



Presentation to Ben
Gummer, MP for Ipswich
21 January 2011

‘Pavement are for people’

A national campaign to reclaim pavements for pedestrians

Sunday, 23 January 2011

This is a short introduction to some work that I and others are doing to end the common practice whereby pavements are used for overspill parking. I am asking for your support.



Pavement parking is a major problem outside London.....
We need a new legal framework to prevent pedestrians
from being marginalised by inconsiderate parking.

Living Streets

2

Sunday, 23 January 2011

2

I will start by noting that this is recognised as a major problem by a number of influential bodies, including Living Streets



Getting about safely on pavements is essential for blind and partially sighted people. We need to be able to use pavements without worrying about obstacles that might be blocking the way.

Unfortunately too many car drivers park on the pavements mistakenly thinking they're doing the right thing in keeping the road clear, forcing pedestrians into the street.

Royal National Institute of Blind People



Parking: pavement and on-street

Standard Note: SN/BT/1170

Last updated: 12 July 2010

Author: Louise Butcher

Section: Business and Transport

This Note outlines the general legal position on pavement parking and the measures available to the police and local authorities to tackle it.

There is no national prohibition against on-street or 'pavement' parking except in relation to heavy commercial vehicles. Local authorities may act to tackle pavement parking in various ways, such as under legislation governing obstruction and dangerous parking; designating limited areas of 'no pavement parking' through a Traffic Regulation Order (TRO); or establishing a special parking area. However, this is a difficult area and there has always been a problem of enforcement of such legal remedies as do exist.

Information on other parking-related matters can be found on the [Roads Topical Page](#) of the Parliament website.



No current law is being broken at this moment. The police could not act.

I will start by emphasising that the police could not act in this instance – the only possibly offence would be ‘obstruction’ and since the police officer could get by then no one is being obstructed. The fact that a mother with a double buggy or someone in a wheelchair may attempt to get to the bus stop in a few minutes is irrelevant! The presence of a vehicle on the pavement can’t be used as evidence that the vehicle was driven onto the pavement (which is an offence).



**This was not considered to be
obstruction by the police in Bristol**

6

Sunday, 23 January 2011

6

To emphasis this, the police in Bristol checked this vehicle after a complaint and evidently said that no offence was being committed, even though it is on a blind bend. There will always be room for argument without a national pavement parking ban.



Here?_7

Sunday, 23 January 2011

7

Again, this is not causing an obstruction at this moment.



Here?

Sunday, 23 January 2011

8

This mother and her children can again get past with a struggle so there is no obstruction.



Parking a car against a bus stop – equally, no offence has been committed (other than driving on the pavement) which is illegal but which can only be actioned if the police see it happening.



10

Sunday, 23 January 2011

10

Here is a typical local street near where I live with cars on the pavement and also a tow-bar overhanging the pavement to catch the unwary. The owners of these vehicles have refused my request to move them.



11

Sunday, 23 January 2011

11

And again, this time a large Parcel Force van and a BMW combine to create a major problem for pedestrians.



12

Sunday, 23 January 2011

12

And then there are bins which just makes it worse.



This might be illegal, but it continues

13

Sunday, 23 January 2011

13

And on some streets bins are left on the pavement permanently, effectively 'privatising' the footway. Ipswich Borough Council has not responded to be request for clarification on this one even though they provided the huge bins for these houses.



Current traffic maintenance regulations requires that signs are left on the pavement like this

Sunday, 23 January 2011

14

And then there is legal requirement to place warning signs for road-works on the pavement. Here we have a combination of pavement parking and road-works signs creating chaos. I have done a traffic count at this point and counted 500 school children passing this point twice a day!



and like this

15

Sunday, 23 January 2011

15

These signs are required even when the road-works (visible in the distance) are not actually causing any further narrowing of the road than the cars which require no warning sign!



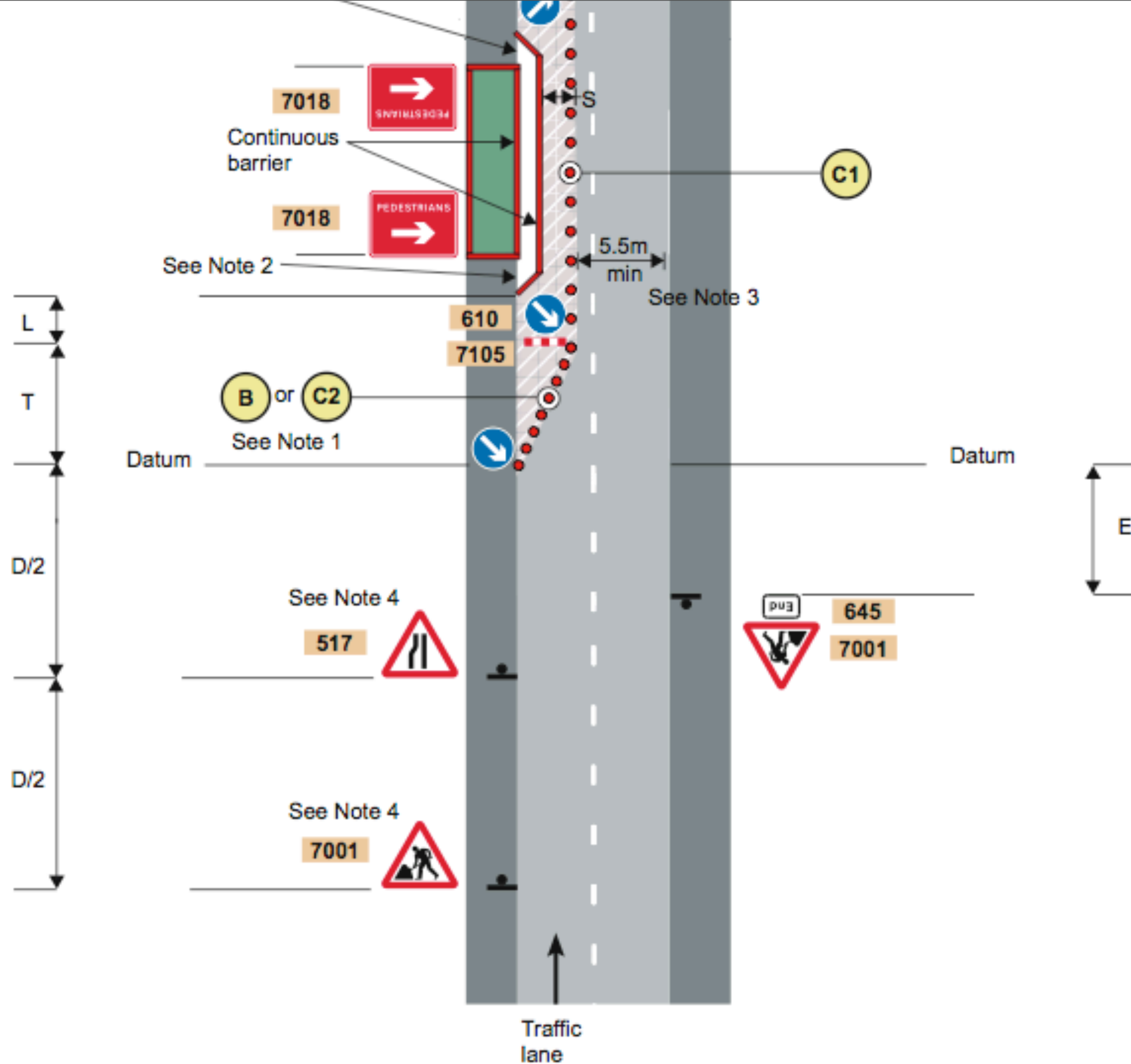
and like this

16

Sunday, 23 January 2011

16

These signs are apparently still required according to the company responsible for this work even in places where it would be impossible for a driver of a vehicle to see them such as on this dead-end street. I asked the workmen to remove the signs, they said they couldn't. I wrote to the company they confirmed that they had to place them like this.



Traffic Safety Measures and Signs for Road Works¹⁷ and Temporary Situations 2009. Part 1 page 118

Sunday, 23 January 2011

17

Here is the diagram from the official DfT guidance showing the mandatory placement of signs on the footway.



This is not ‘criminal damage’, indeed the police are powerless to do anything about it

Causing damage like this to a park would be ‘criminal damage’, with verges the police can do nothing even though it is often a deeply contentious issue in many residential areas.



Sunday, 23 January 2011

19

An offense is being caused here by the post office van and the other car, but the police can not act because it is a civil enforcement matter. The police have asked me to ask you to request that police can act in addition to the civil enforcement officers in such situations.



Again, the police can't act here even though parking on the pavement by yellow lines is illegal – this is something that can only be enforced by a civil officer resulting in duplicated effort.



The law is so complicated that it was only when I told the local police about their powers to stop drivers blocking raised crossing that they became aware of it at all! This is not a criticism of the police as such, just a reflection that the law is hopelessly confusing.



This is illegal but happens every day

22

Sunday, 23 January 2011

22

Even when the police are able to act, such as on the approach to a crossing drivers working of major companies brazenly ignore the law. The vehicle is also blocking a cycle track and the exit of the cycle track onto the road.



and again

23

Sunday, 23 January 2011

23

Here is another example taken a few days later, again on pelican crossing. In this case the firm did at least take it seriously and reprimanded the driver.



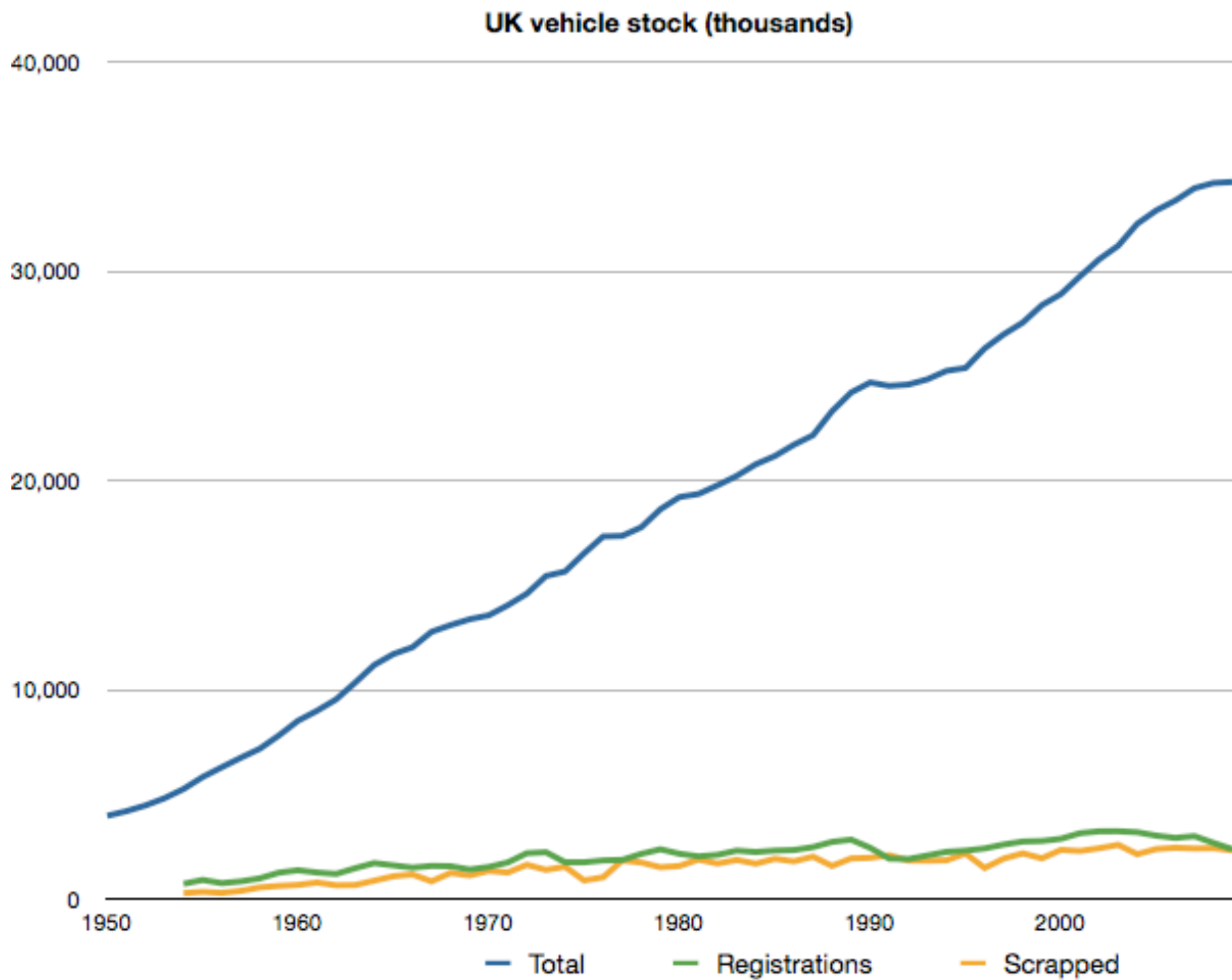
Pavement parking damages surfaces leading to falls, and large repair and compensation bills

24

Sunday, 23 January 2011

24

As well as causing inconvenience to pedestrians, the parking on pavements causes serious damage to the pavements themselves which in turns leads to the creation of trip hazards and costs for both compensation and repair.



Vehicle numbers are just increasing....

25

The number of registered vehicles in this country just goes up and up making the problem worse each year. Economists celebrate when sales increase and worry when they don't.

The Telegraph

Search - enhanced by Google

HOME **NEWS** SPORT FINANCE COMMENT CULTURE TRAVEL LIFESTYLE FASHION TECHNOLOGY Jobs Dating Offers

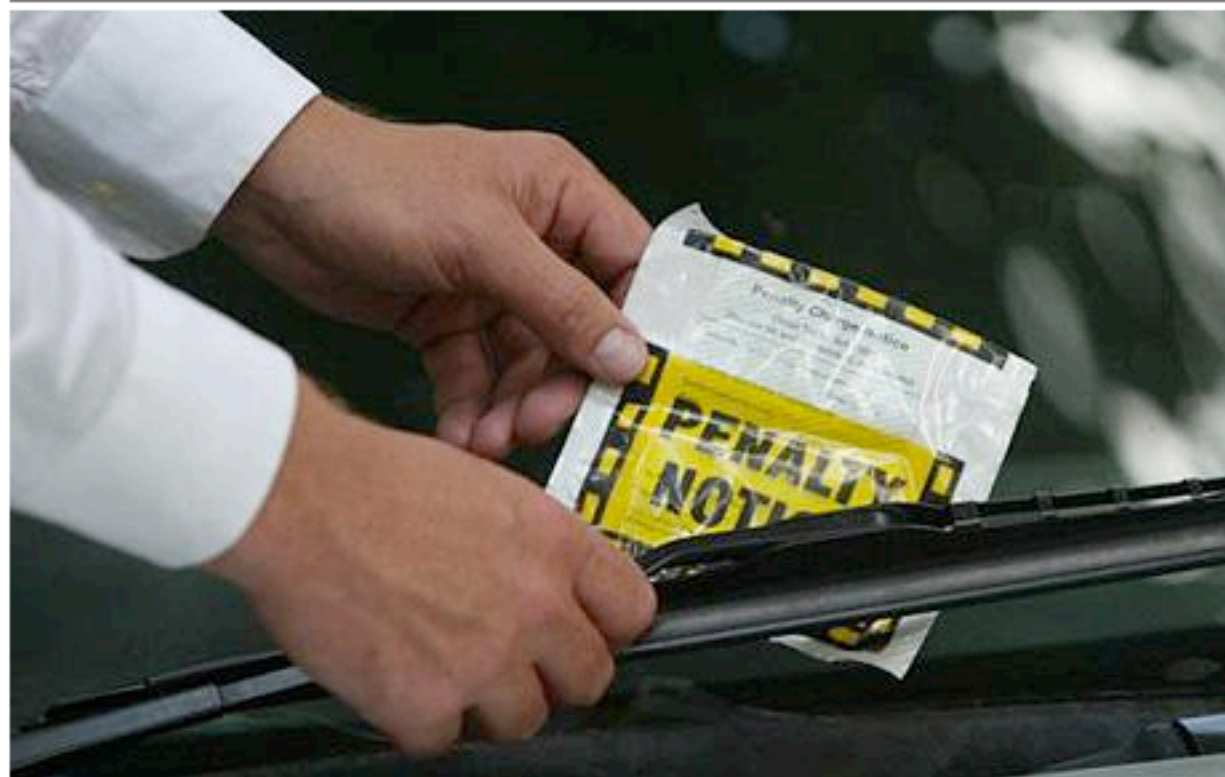
UK World Politics Obituaries Royal Wedding Earth Science Health News Education Celebrities Weird News News Blogs

Royal Family Royal Wedding Religion Road and Rail Defence Scotland Northern Ireland

Law and Order

Traffic wardens stoned by parents outside school

Traffic wardens have been told to patrol in pairs outside five schools after parents became so angry about a parking crackdown that they threw stones at them.



Traffic chaos outside schools has led to tension Photo: HEATHCLIFF O'MALLEY

By Caroline Gammell 7:29PM BST 29 Apr 2009

The situation outside the schools in Essex has not been helped that the police

Share:   

 Recommend

 Tweet 0

Law and Order
News » UK News »

IN NEWS



Foreign Office: Britain
'will act on torture
intelligence'



THE TELEGRAPH ON FACEBOOK »



The Telegraph on Facebook

 Like

3,450

LOCAL LISTINGS

CARLTON BUILDING PLASTICS

Windows & Doors, Fascias & Soffits, Pvcu



[This Is Local London](#) » [News](#) »

NEWS [+ SEND YOUR NEWS](#)



Live Traffic & Travel information >>>

'Angry mum beat me', says 60-year-old Southfields man

7:50am Saturday 25th September 2010



Print



Email



Share



Comments(3)

Exclusive By [Ian Mason](#) »

Young children watched in horror when an argument over parking during the school-run erupted into a full-blown street brawl.

According to witnesses, a 60-year-old man was beaten to the ground by a parent and her friend after he objected to the two women blocking Weydown Close, in Southfields, by parking in the middle of the road.

Neighbours stood stunned as the fight exploded



Shaken: Barry Jones says he was attacked



WHAT'S ON [LIVE TRAVEL](#)

Last updated 23.02 with 11 incidents

● [Victoria Line London](#) »
Minor delays due to incident

● [M3 Surrey](#) »
Queueing traffic and two lanes closed due to down lorry and recovery work

● [A40 Western Avenue Acton](#) »
Restrictions and traffic light failure

● [A504 West Green Road Southall](#) »
Road closed due to serious police incident

[Full Traffic Report](#) »

FEATURED JOBS

[Evening Cleaner St Albans](#)
[Cleaning Site Manager Harlow](#)
[Viewing Assistant Harlow](#)
[Negotiator St Albans](#)
[Sales Executive Harlow](#)
[Sales Executive Harlow](#)

[Home](#)[News](#)[Sport](#)[Business](#)[Entertainment](#)[Lifestyle](#)[General](#)[Jobs](#)[Property](#)[Motors](#)[Classifieds](#)[Director](#)[Universities](#)[Video](#)[Messageboards](#)[Blogs](#)[Travel](#)[Weather](#)[E-Editions](#)[RSS Feeds](#)[Photo Sales](#)[Rosie Hospital](#)

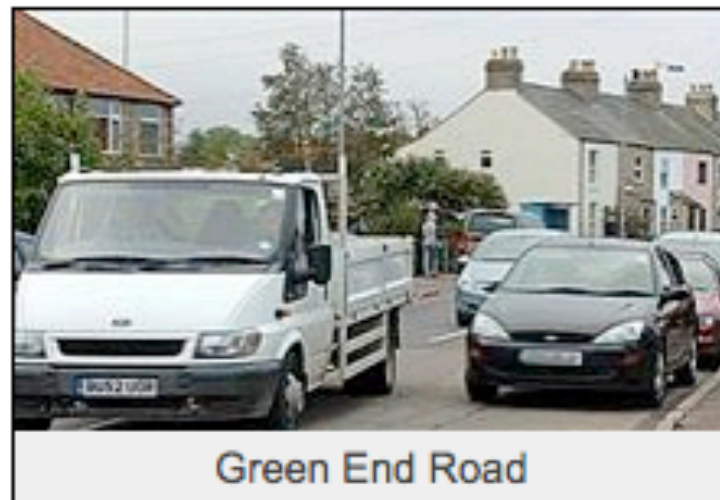
Published: 07/10/2010 07:59 - Updated: 08/10/2010 08:03

Help us, plead residents in fear of 'school run' parents

Chris Havergal

Residents of a Cambridge cul-de-sac claim they are being verbally abused by parents who park outside their homes to drop off and collect school pupils.

Householders from Evergreens, off Green End Road, Chesterton, said their street was "basically used as a car park at 9am and 3pm" by motorists heading to Shirley Primary School.



Green End Road

They said vehicles were being parked not only on the road but also across driveways and on their property.

A meeting of Cambridge City Council's north area committee heard that some parents were even driving across gardens. Residents said if they tried to reason with the parents, they were met with a hail of abuse.

One told councillors of an episode when he was unable to drive out because of

[Home](#)[Sport](#)[Business](#)[National News](#)[National Sport](#)[Travel](#)[Jobs](#)[Property](#)[Motors](#)[No Win No Fee](#)[Holiday Rentals](#)[Online Dating](#)

HEADLINES

[Right royal row over 'shame'](#)[Funding for United's after-sc](#)[Brave woman fights off sex](#)[Delays after three-vehicle s](#)[Win an iPad with the Camb](#)[Young and old suffer as axe](#)[Cuts are 'chronically devast](#)[Sex charge mum 'was warn](#)[Drink-drive arrests rise durin](#)[Jobless can book in for hote](#)

NATIONAL

[Honeymoon murder accuse](#)[Jobcentre staff in two-day s](#)[Muslim prejudice 'seen as n](#)[Pair banned over 'car park s](#)

[News](#)

[Sport](#)

[Lifestyle](#)

[Community](#)

Thursday 20 January 2011

[Log in](#)

[Register](#)

[Jobs](#)

You are here [News](#) > [Local](#)

Safety pleas as pupils are hit by car

Published on Thu Feb 26 15:43:41 GMT 2009

A school has relaunched a plea to parents to stop parking illegally after three young children were knocked over on the pavement.

The youngsters were knocked to the ground when a parent pulled up on to the pavement outside Park Infants school in Park Avenue, Kettering, and opened the door without looking.

The children were not badly hurt in the incident a few days ago but it has again highlighted the ongoing issue the school has with people parking illegally.

Headteacher Margaret Lewin said: "We have a small group of parents who park on double yellow lines and the pavement or on junctions, which is dangerous for people.

NEWS

[Local](#)

[Your Towns](#)

[Campaigns](#)

[Features](#)

[Business](#)

[Education](#)

[Columnists](#)

[Health](#)

[Regional](#)

[National](#)

TOP STORIES

[Bridge is a danger to](#)

Popu

[> Pack](#)

[> Bridg](#)

[> offic](#)

[> ...](#)

Lancashire Telegraph » News »

NEWS  [+ SEND YOUR NEWS](#)

REGISTER NOW TO POST YOUR COMMENTS ON THESE STORIES

It's free and only takes a few seconds. Click [here](#) to go to the registration page.

Warnings after girl knocked down in Burnley

7:00pm Wednesday 10th November 2010

 Print  Email  Share  Comments(10)

A THREE-YEAR-OLD girl was seriously injured when she was knocked down by a car outside a school in Burnley.

The youngster ran from between parked cars into the path of a reversing car outside St Peter's Primary School in Church Street.

MOST READ

MOST COMMENTS

1. Argentina ace Riquelme is offered to Blackburn Rovers
2. Burnley 'Suicide Squad' hooligans jailed for 32 years
3. Blackburn Rovers make Birmingham City an offer for Larsson
4. Blackburn school goes into special measures
5. Tindall: Burnley fans made all the difference
6. Crown Paints still to decide on Blackburn Rovers shirt deal
7. 'East Lancashire rape victim silenced'
8. New Blackburn Rovers signing Jones: Premier League doesn't scare me

30

and another injury. This 3yo had her leg broken by a vehicle reversing into an illegal parking spot.

News

Mum blocks off road to stop school run parents parking on pavements

October 14, 2010

[Share Article](#) | [Submit Comments](#) | [Comments \(53\)](#) | [Printable Version](#) [Previous](#) | [Next](#)



Jayne, a customer service advisor who lives on Longley Lane, has taken to blocking traffic on nearby Elmfield Road to highlight the problem.

Mum Jayne Tilbury is so sick of parents blocking the pavement with their

Ads by Google

[Ask a Solicitor: Parking](#)

5 Solicitors Are Online. Ask a Question, Get an Answer ASAP.
[JustAnswer.com/Law/Pa](#)

[Large School Displays](#)

Designed to enhance the learning environment. Find out more today.
[Samsung.com/Large Fo](#)

[Pilot Training](#)

BUXTON SPA EXPRESS

Saturday 26th February

is on this special train from
shire which weaves its way
the Pennines to its destination
high spa town of **Buxton**.

at the high spa town of **Buxton**.

CLICK HERE or Phone us on
01553 661500
for more information



HOTELS



HOLIDAYS



PERSONAL
FINANCE



SHOPPING



DATING



WHAT'S ON



JOBS



PROPERTY





APPS



Pavements are for People!



In some places the police are working with locals. In Oxford they provide free stickers for windscreens through the local library system. Big Society in action?

[Home](#) [News](#) [Sport](#) [What's on](#) [Places](#) [Services](#) [Vouchers](#) [Restaurants](#) [Traffic](#) [Pictures](#) [Weather](#)[Letters](#) [Headlines](#) [Crime](#) [Courts](#) [Education](#) [Health](#) [Nostalgia](#) [Sentinelle](#) [Council](#)from **The Sentinel**Thursday, October 07, 2010,
09:20 **7 comments** **Share**

Pupils plan red card for problem parkers outside school



WARNING: Matthew Wilkinson, left, and Thomas Simpson, aged 10, hand out leaflets to motorists under the supervision of PC Ruth Barlow. Picture: Neil Hulse

By James Truswell James.truswell@thesentinel.co.uk

PUPILS will patrol busy streets near their school to hand out warnings to inconsiderate drivers.

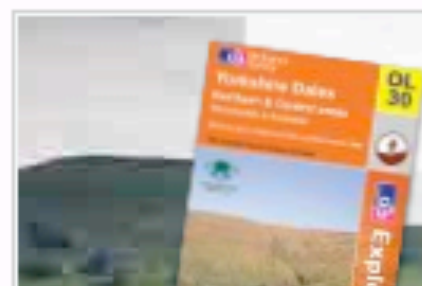
33

Two youngsters will join neighbourhood police officers in the surrounding area at peak times. And they will hand

Sunday, 23 January 2011

33

And the police work with the schools and even get the kids to tell the adults off!



3 for 2* on all OS Classic and Active maps.
Discover more of the great outdoors.

Buy Now →



SEARCH

GO

Home

News

Business

Sport

Entertainment

Lifestyle

Jobs

Property

Motor



A: A: A: A:

me | News | New pavement parking ban 'just a cash cow'

New to the site

Browse Sections

National News

Wokingham News

Bracknell News

Education

Special features

Jobs

Property

Interactive

Photo sales

Video

Competitions

Goal Post forums

Columnists

Blogs

Popular Sections

Reading FC

London Irish RFC

News

« Previous Story | Next Story »

Print Article | Share this article | Submit Comments | View Comments (51) **9** retweet

New pavement parking ban 'just a cash cow'

November 03, 2010

Reading Borough Council is using the new ban on parking on pavements and verges as a "major cash cow".

That was the view of opposition councillor Tony Page at the cabinet meeting on Monday where he objected to the lack of consultation on the new parking regulations.

He pointed out in the council budget papers a sum of £150,000 – between 2,500 and 5,000 fines – the council expects to collect in this financial year in just two months from the start of the ban.



Cllr Tony Page pointed out that the council expects to collect £150,000 in the first two months of the ban

Business

What

Where

Search



Home

Jobs

Software
program

Small, fri
developm

Ripley

Portico C

Ripley

Click for

Brought to

inhe

However it is very political. In Reading the Conservatives and LibDems want a ban and Labour are fighting it.

homes24

jobs24

drive24

mydate24

myphotos24

EAST ANGLIAN

Lee's back in Town

New year, new job?

Author's anger at threat to libraries

Click here to read more of our digital publications

Community speed crackdown catches nearly 500

✉ By Colin Adwent, crime correspondent

Thursday, 22 April, 2010
9:50 AM

A DIY community crackdown in Suffolk towns and villages has led to nearly 500 speeding drivers receiving written reprimands, according to police.



PC Mark Williams showing Blythburgh resident Ro Williams how to use the speed gun

Share |

Your View Email Print Got a Story?

35

The initiative is being hailed a success after residents using speed guns caught 467

More news

Town centre street ban could be lifted

Two developments for village street cleared

Suffolk: Police name A1095 fatal crash driver

Economy is blamed for rise in burglaries

Apex funding is questioned

Ipswich: Car crash leaves one injured and blocks busy road

Suffolk: It's time for our council chiefs to take a pay cut

UK: Shadow chancellor Alan Johnson quits

I want to see 'community parking watch' schemes set up along similar lines to community speed watch. In addition we will need a national ban on pavement parking but this will only be achieved with widespread support.



36

36

Sunday, 23 January 2011

Members will give out tickets with official support from the police as in Oxford. Currently people are using informal leaflets with mixed results.



37

Sunday, 23 January 2011

37

And accept photograph evidence which they will follow up with warning letters.



38

Sunday, 23 January 2011

38

Finally... we can't clear the pavements of cars in many of our urban areas without many people disposing of their vehicles and joining car clubs. Thank you.



‘Pavement are for people’
A new national campaign to reclaim pavements for pedestrians

So.. will you give your support to the campaign??